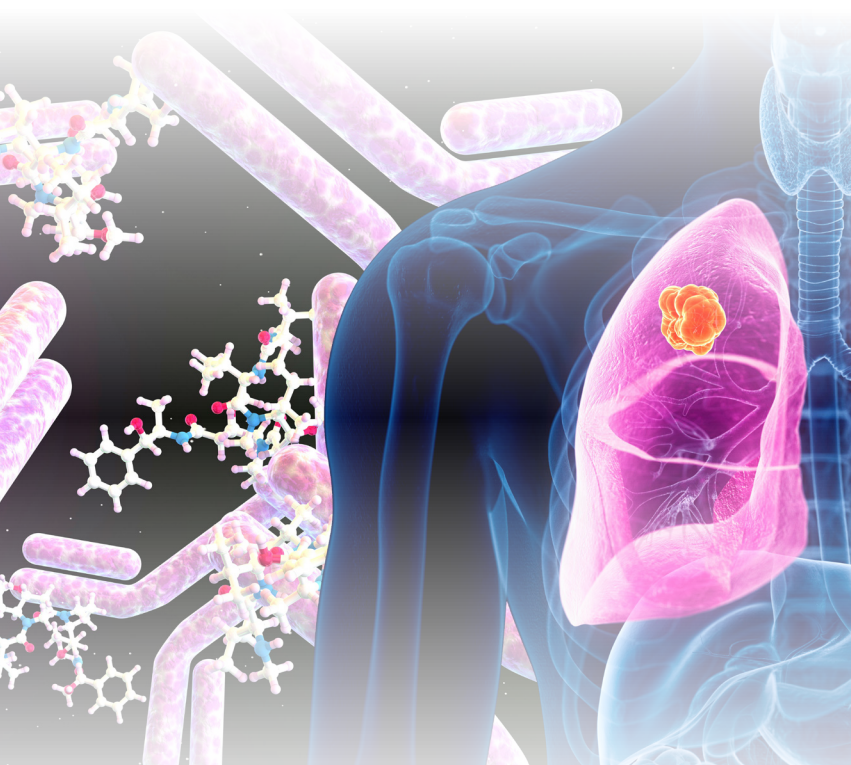


Satellite CME Symposium

Harnessing the Potential of HER2-, HER3-, and TROP2-Targeted Therapies to Address Unmet Needs in Advanced NSCLC



Live Web Broadcast

Tuesday, September 14, 2021

15:00–16:00 MDT (5:00–6:00 PM EDT)



CHAIR & PRESENTER

Melissa L. Johnson, MD

Sarah Cannon Research Institute
Nashville, Tennessee



PRESENTER

Benjamin Levy, MD

Johns Hopkins School of Medicine
Johns Hopkins Sidney Kimmel Cancer
Center (SKCC) at Sibley Memorial Hospital
Washington, District of Columbia



PRESENTER

Helena A. Yu, MD

Memorial Sloan Kettering Cancer Center
New York, New York

[PeerView.com/LungADC21-Virtual](https://www.peerview.com/LungADC21-Virtual)

Key Reasons to Attend

- Test with more confidence: Learn what biomarkers to test for, and with which methods, to identify patients with NSCLC who are most likely to benefit from novel HER2-, HER3-, and TROP2-targeted therapies
- Update your treatment algorithms: Find out where the emerging HER2-, HER3-, and TROP2-targeted therapies are likely to fit in within the treatment arsenal for advanced NSCLC
- Become better prepared to select the right treatment for the right patient at the right time: Receive practical, case-based guidance and useful tools to navigate the growing complexity of biomarkers and therapies in advanced NSCLC

PeerView
Live



This program was approved by the IASLC 2021 World Conference on Lung Cancer Program Committee as an independent activity held in conjunction with the IASLC 2021 World Conference on Lung Cancer. This program is not sponsored or endorsed by IASLC and is not part of the official IASLC accredited program.

This activity is accredited by Medical Learning Institute, Inc.

This activity is developed with our educational partner, PVI, PeerView Institute for Medical Education.

This activity is supported by independent educational grants from AstraZeneca and Daiichi Sankyo, Inc.